

PRESS RELEASE

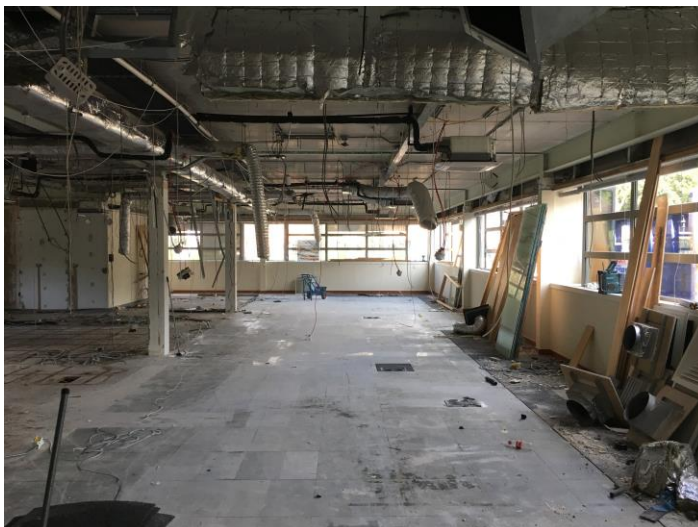
Major Refurbishment of Grade A office space in High Wycombe

Chandler Garvey is currently involved with 4 major office refurbishment schemes that will deliver circa 90,000 sq ft of new grade A office space to the market in Wycombe District.

The schemes are; St Johns Place (circa 27,000 sq ft) in High Wycombe town centre, Oakingham House (circa 12,500 sq ft) close to junction 3 of the M40, Buckingham Court (circa 11,000 sq ft) on Kingsmead Business Park and One Globeside (circa 36,000 sq ft) on Globe Park in Marlow.

Michael Garvey, Managing Director of Chandler Garvey, commented, "These are exciting projects and are well timed, as there is shortage of larger Grade A space in the Wycombe District market. Market conditions are improving all the time and with completion on all 4 scheme planned before the end of the year we are confident that demand will be strong, especially as the products are first class."

Chandler Garvey is working with a number of different joint letting agents on these schemes, including Bray Fox Smith (St Johns House and Globeside), Knight Frank (Kingsmead Business Park) and Savills (Oakingham House).



Oakingham House – due to be refurbished by the end of October 2016.

www.chandlergarvey.com

Amersham

Tel: +44 (0)1494 723 999

Aylesbury

Tel: +44 (0)1296 398 383

High Wycombe

Tel: +44 (0)1494 446 612

Marlow

Tel: +44 (0)1628 902 488

Slough

Tel: +44 (0)1753 725 700